

# What's Trending? Kratom

Kratom (*Mitragyna Speciosa*) is a tropical plant native to Southeast Asia with psychotropic or mind-altering compounds.



Unregulated, so there are no safety standards for the product in the U.S.

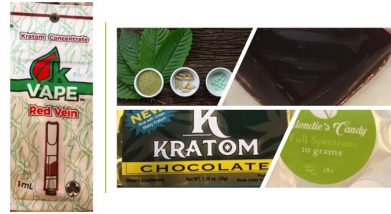


Deaths related to Kratom in 2017, as reported by FDA

44

- Not currently illegal nationally
- Easily ordered on the internet
- Some Southeast Asian countries, 6 U.S states and 3 cities (including the District of Columbia) have banned Kratom due to serious health risks

Available in many forms, including...



These include.....

- Seizures
- Hallucinations
- Constipation
- Dry Mouth
- Nausea
- Loss of Appetite
- Itching

Vape Pens, Edibles and Extract

## What Coalitions Can Do



1. **EDUCATE** yourself and your community on this substance, its uses, forms and harms
2. **RESEARCH** your local and state laws on Kratom
3. **CONNECT** with SAMHSA's National Helpline at 1-800-662-HELP for more information

Questions? Email: [training@cadca.org](mailto:training@cadca.org)

References:  
dea.gov/press-releases/2016/08/30/dea-announces-intent-schedule-kratom  
drugabuse.gov/publications/drugfacts/kratom  
fda.gov/NewsEvents/Newsroom/PressAnnouncements/ucm595622.htm